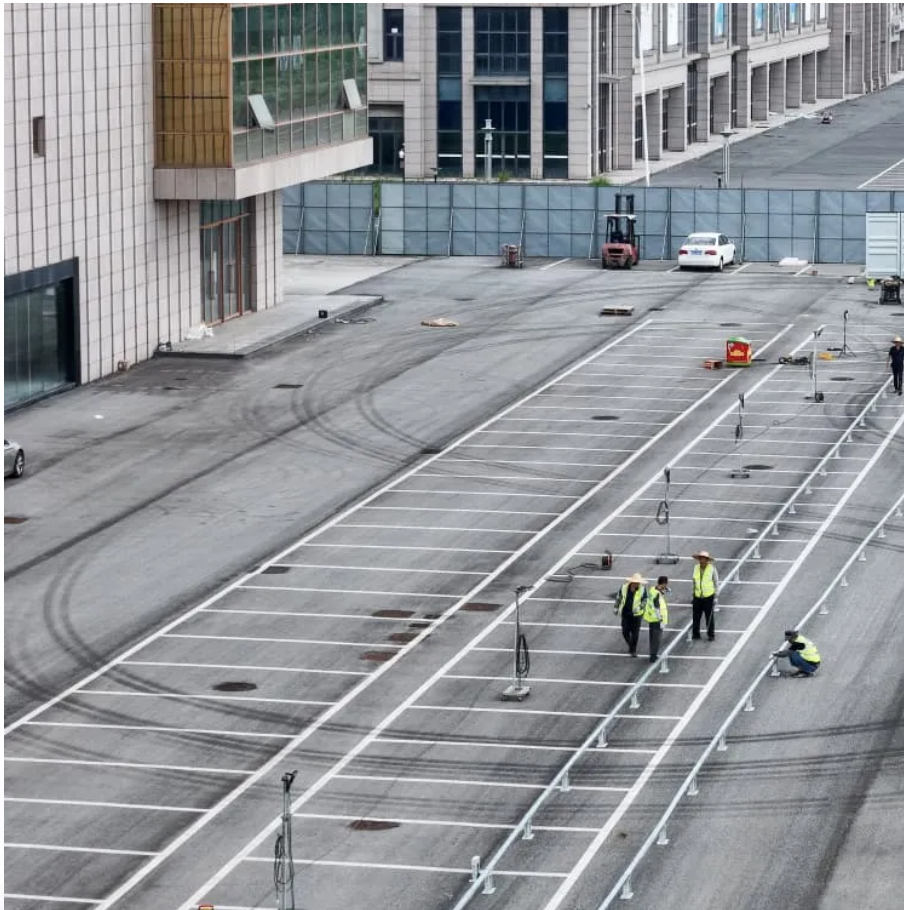


Kongres Container

Can the inverter be connected to DC power



Overview

A power inverter changes DC power from a battery into conventional AC power that you can use to operate all kinds of devices . electric lights, kitchen appliances, microwaves, power tools, TVs, radios, computers, to name just a few.

A power inverter changes DC power from a battery into conventional AC power that you can use to operate all kinds of devices . electric lights, kitchen appliances, microwaves, power tools, TVs, radios, computers, to name just a few.

A power inverter changes DC power from a battery into conventional AC power that you can use to operate all kinds of devices . electric lights, kitchen appliances, microwaves, power tools, TVs, radios, computers, to name just a few. You just connect the inverter to a battery, and plug your AC.

In simpler terms, an inverter is a device that converts current from batteries or a solar panel to AC. The article concludes with a step-by-step explanation of DC to AC power conversion, internal parts, and the working of different types of inverters, and their comparison. Also, the article.

Car Gadgets Image Gallery An inverter like this 200-watt unit is easy to use and install. It's very portable, but its best suited for powering small electronic devices. See more pictures of car gadgets. Everyone uses some kind of electronic gadget while in their car, SUV, or motor-home. You might.

That means if you want to run something like an AC-powered gadget from a DC car battery in a mobile home, you need a device that will convert DC to AC—an inverter, as it's called. Let's take a closer look at these gadgets and find out how they work! Photo: A detail of the electronic circuit inside.

A power inverter changes DC power from a battery into conventional AC power that you can use to operate all kinds of devices . electric lights, kitchen appliances, microwaves, power tools, TVs, radios, computers, to name just a few. You just connect the inverter to a battery, and plug your AC.

An inverter is a device that converts DC (direct current) electricity from batteries into AC (alternating current) electricity, which can be used to power various appliances in your home. Connecting an inverter to your house wiring system requires careful planning and adherence to electrical safety.

Can the inverter be connected to DC power

Contact Us

For catalog requests, pricing, or partnerships, please visit:
<https://www.drugiswiatowykongrespolakow.pl>