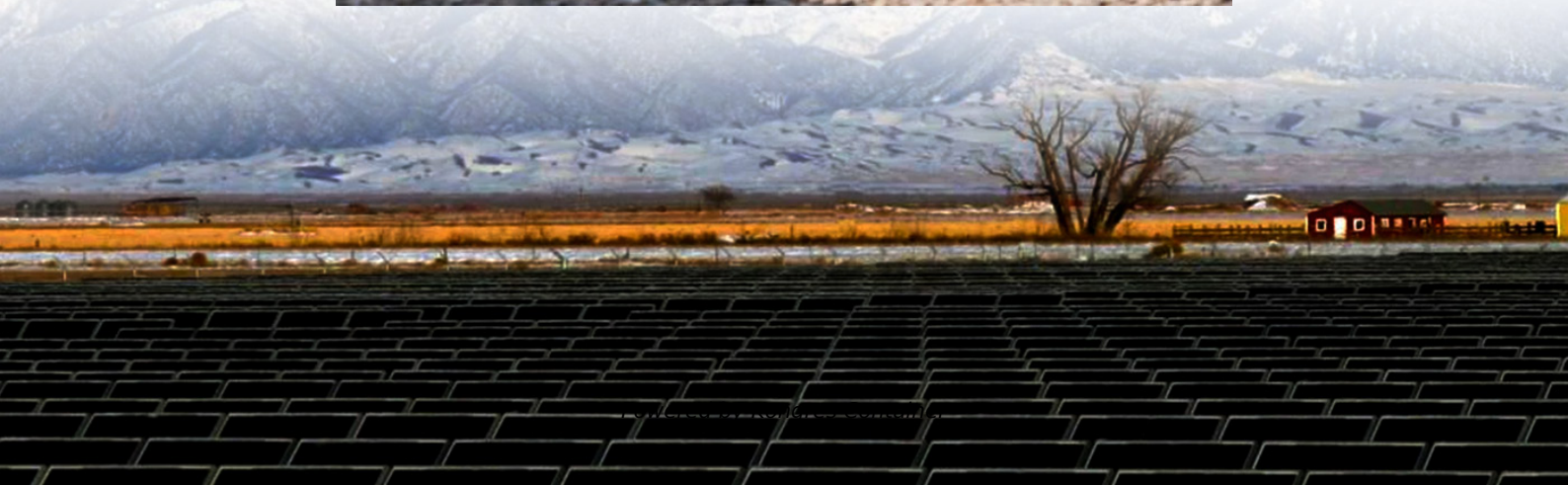
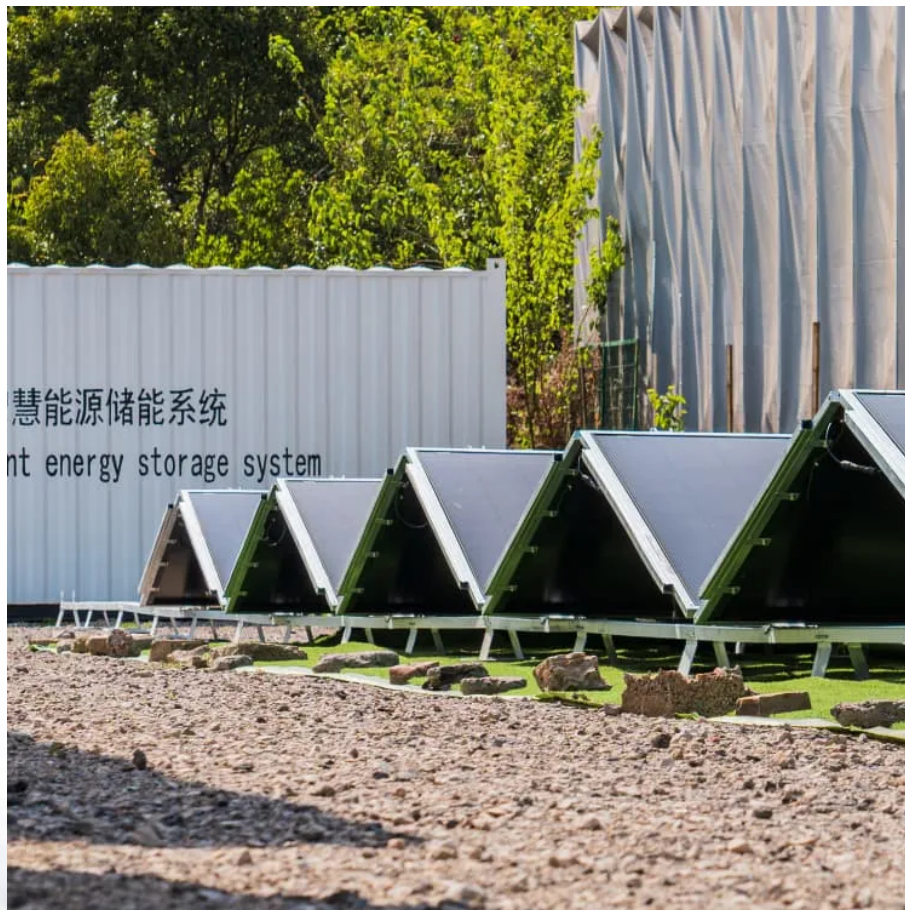


## Kongres Container

# Can the communication base station inverter be installed on the roof



## Overview

---

The inverter must be mounted on the roof on the framework underneath the PV modules or on a solid support surface (e.g. concrete, brickwork). In living areas, ensure that the support surface is not drywall or similar. When in operation, the inverter makes noises which can be perceived.

The inverter must be mounted on the roof on the framework underneath the PV modules or on a solid support surface (e.g. concrete, brickwork). In living areas, ensure that the support surface is not drywall or similar. When in operation, the inverter makes noises which can be perceived.

Install the communication base station inverter on the roof and connect it to the grid  
Page 1/4 SolarInnovate Energy Solutions  
Install the communication base station inverter on the roof and connect it to the grid  
Powered by SolarInnovate Energy Solutions  
Page 2/4 Overview  
How do you connect a grid.

If the structural engineer determines the building can handle the load, the next thing to consider is how you will mount the inverter on the roof. One option is to cut out a section of roof membrane and insulation and install a flashed curb that is bolted directly to the roof deck below. Effective.

The mounting location must be suitable for the weight and dimensions of the inverter ( > Technical Data). The inverter must be mounted on the roof on the framework underneath the PV modules or on a solid support surface (e.g. concrete, brickwork). In living areas, ensure that the support surface is.

PV + Communication base station  
By installing photovoltaic power generation systems on the roof, tower frame, and available ground of the communication base station, the backup power supply guarantee capability of the communication base station is improved, and the function of the base station is.

The incident took place at a residential complex in Dongguan, Guangdong province. Recently, some netizens reflected on the network platform: above the master bedroom, three hidden base stations were installed, seriously

affect daily life. The family lives in fear every day, they require the relevant.

Could I just put a mobile antenna (magnetic stick on car style) on the peak of my steel roof?

The roof is over 25' at the peak. It angles down at 18:12 slope, would that ruin the ground plane compared to the flat roof of a car?

Thanks in advance for your input. Archived post. New comments cannot be.

## Can the communication base station inverter be installed on the roof?

---

### Contact Us

---

For catalog requests, pricing, or partnerships, please visit:  
<https://www.drugiswiatowykongrespolakow.pl>