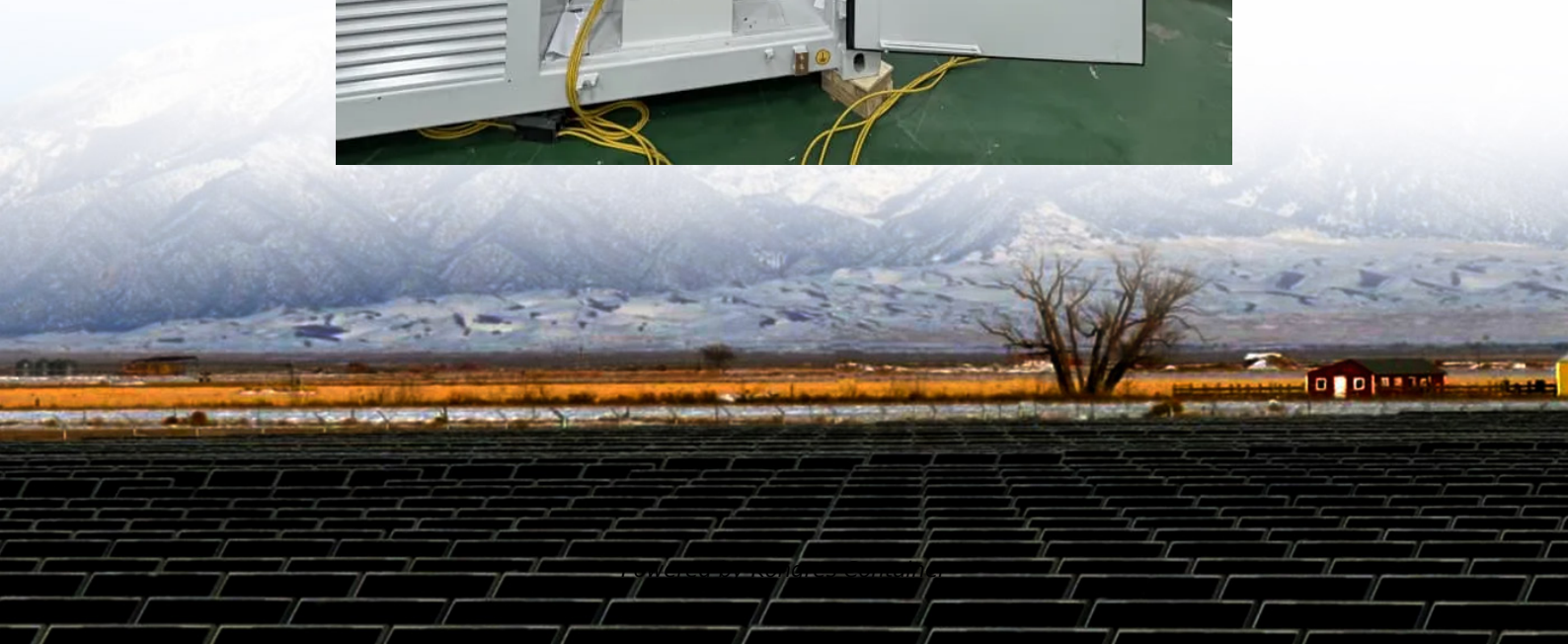


## Kongres Container

**Can energy storage generate electricity and discharge electricity at the same time**



## Overview

---

A battery energy storage system (BESS) is an electrochemical device that charges (or collects energy) from the grid or a power plant and then discharges that energy at a later time to provide electricity or other grid services when needed.

A battery energy storage system (BESS) is an electrochemical device that charges (or collects energy) from the grid or a power plant and then discharges that energy at a later time to provide electricity or other grid services when needed.

Battery storage is a technology that enables power system operators and utilities to store energy for later use. A battery energy storage system (BESS) is an electrochemical device that charges (or collects energy) from the grid or a power plant and then discharges that energy at a later time to.

In addition, energy storage can reduce the cost of electricity (storing energy when it is cheapest, dispatching it when it is most expensive), and increase the reliability of our aging electric grid increasingly strained by climate change. Historically, power on the grid has flowed in one direction.

An energy storage system (ESS) for electricity generation uses electricity (or some other energy source, such as solar-thermal energy) to charge an energy storage system or device, which is discharged to supply (generate) electricity when needed at desired levels and quality. ESSs provide a variety.

Sometimes energy storage is co-located with, or placed next to, a solar energy system, and sometimes the storage system stands alone, but in either configuration, it can help more effectively integrate solar into the energy landscape. What Is Energy Storage?

“Storage” refers to technologies that.

Since opportunities for the large-scale storage of electricity are few, it is essentially a just-in-time resource, produced as needed to meet the demand of electricity-consuming customers. Climate change mitigation has increased

the focus on the use of renewable electricity. While energy storage is.

Grid-scale storage refers to technologies connected to the power grid that can store energy and then supply it back to the grid at a more advantageous time - for example, at night, when no solar power is available, or during a weather event that disrupts electricity generation. The most widely-used.

## Can energy storage generate electricity and discharge electricity at

---

### Contact Us

---

For catalog requests, pricing, or partnerships, please visit:  
<https://www.drugiswiatowykongrespolakow.pl>