

## Kongres Container

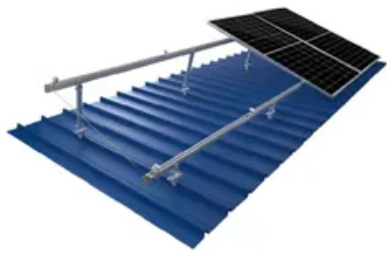
# 48v 150w inverter



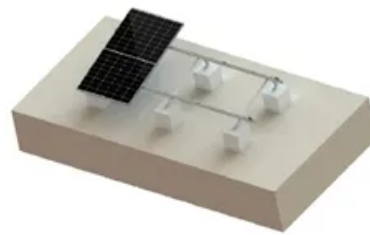
TILE ROOF SOLAR MOUNTING SYATEM



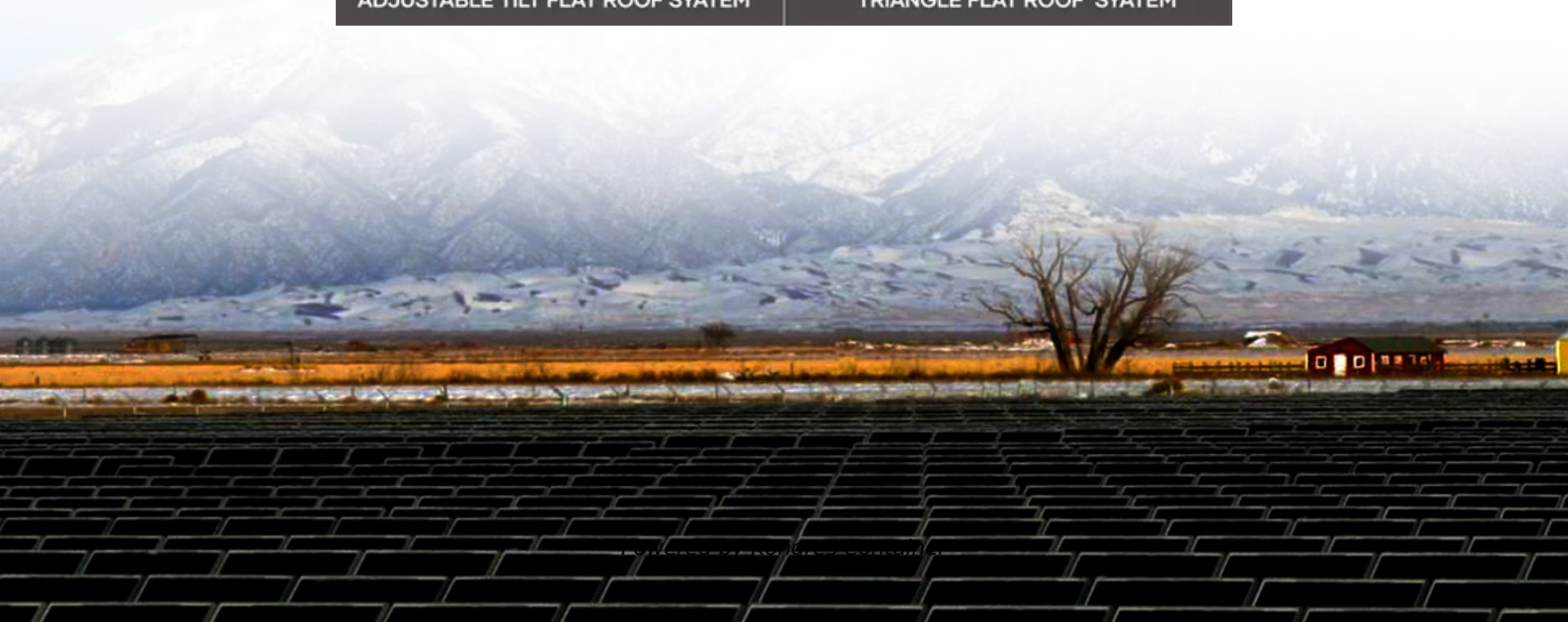
STANDING SEAM ROOF SYATEM



ADJUSTABLE TILT FLAT ROOF SYATEM



TRIANGLE FLAT ROOF SYATEM



## Overview

---

What is a 150 watt power inverter?

A 150 watt power inverter is a device that converts DC (direct current) electricity to AC (alternating current) power, enabling you to power larger devices. For most appliances and gadgets to function properly, they require either pure sine or modified wave AC power.

What is a 48 volt inverter?

In other words, it is a device that can take current from a bank of batteries (48V) and convert it to the type supplied in the grid to power your appliances and devices. I suggest you use A 24-volt inverter or 36-volt inverter or 48-volt inverter when you need to power appliances over 3000 Watts.

What is a gp-sw150 inverter used for?

GP-SW150 is ideal for powering smaller appliances and electronics such as laptops, gaming consoles and table fans. View our complete line of Pure Sine Wave inverters.

What makes suresine a great inverter?

They greatly expand our inverter offering that started with the acclaimed SureSine Classic. This new SureSine line has: SureSine line uses industrial-grade build quality throughout, with models built around premium toroidal transformers for improved sinewave stability.

## 48v 150w inverter

---

## Contact Us

---

For catalog requests, pricing, or partnerships, please visit:  
<https://www.drugiswiatowykongrespolakow.pl>