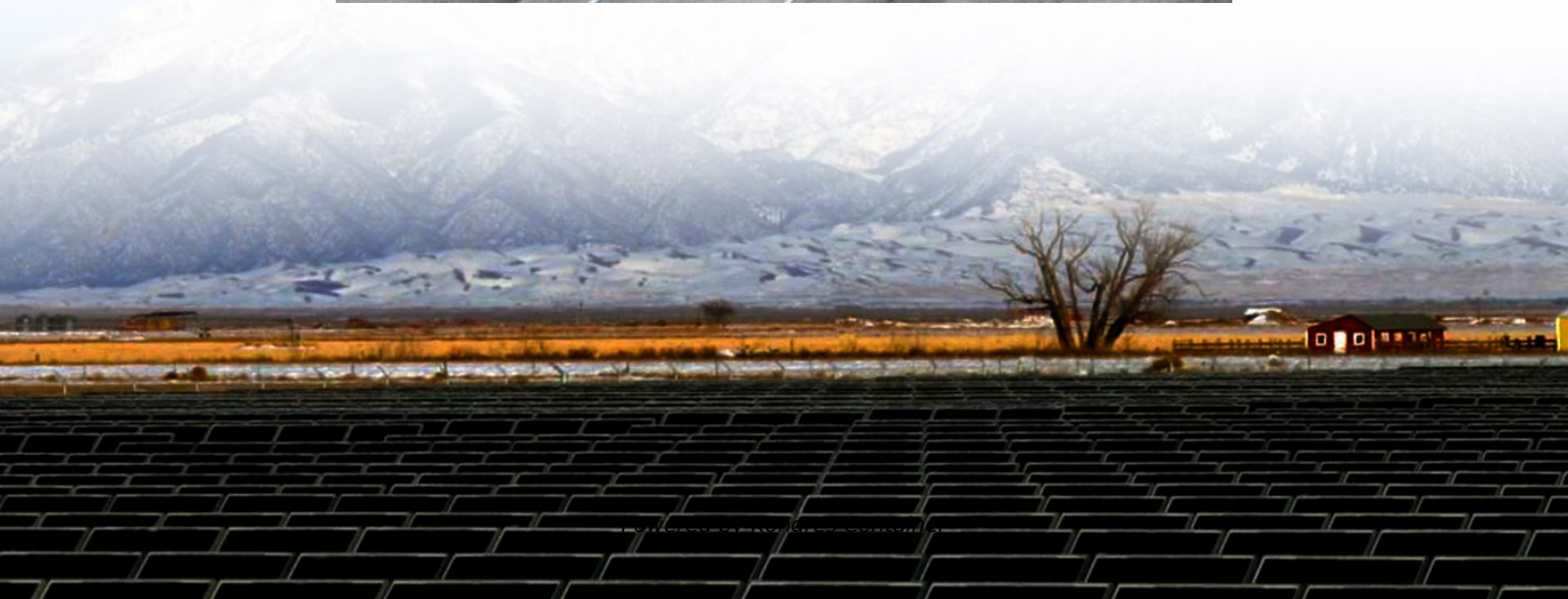
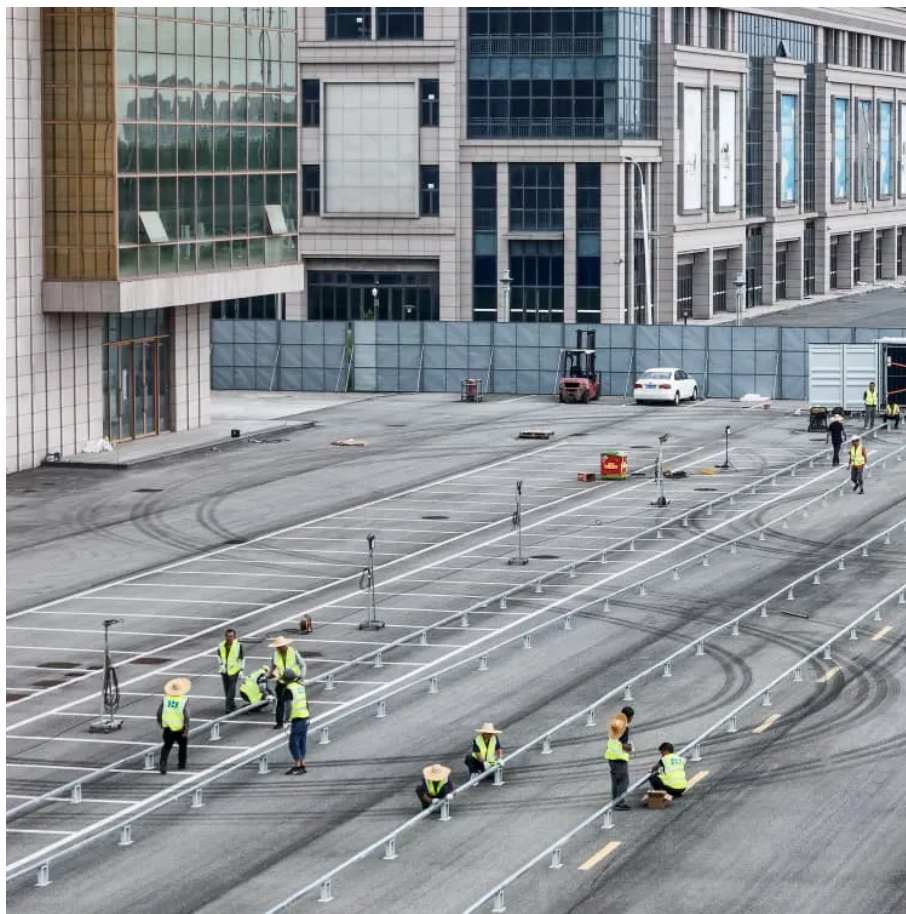


Kongres Container

36 inverter to 12v inverter



Overview

What is a 36V to 12V inverter?

All our 36V to 12V inverters meet high quality standards and have high efficiency. They also feature overload and temperature protection and offer a stabilised output voltage.

What is a 36V to 12V DC/DC converter?

A 36V to 12V DC/DC converter, also known as an inverter, converts the input DC voltage to a 36V stabilised DC voltage. DWE supplies DC/DC converters with various input voltages over a wide range and different output voltages. All our 36V to 12V inverters meet high quality standards and have high efficiency.

What is a 36kw inverter?

The 36kW is an extension of the existing 23kW and 28kW inverter line and features a dual MPPT design with up to 98.6% conversion efficiency and wide operating window of 240-950Vdc. An installer friendly and integrated wire box simplifies installation and reduces BoS costs.

What is 36V DC to 12V buck converter used for?

Industry grade 36V DC to 12V DC buck converter, widely used in automotive, electricity, surveillance systems, railway signals, instruments, solar generate electricity, display screen of bus and taxi, car audio device, security systems, hospital equipment, telecommunications etc.

What is the difference between idc-360c-12 and ly500-dd12-l?

The IDC-360C-12 is a DC/DC converter that converts a DC voltage from 36V to 12V DC voltage and can supply a direct current of up to 30A. The LY500-DD12-L is a 12V converter of 500W.

What is the difference between dr240 DD12 E and idc-360c-12?

The DR240-DD12-E is a waterproof DC/DC converter that converts a DC voltage from 36V to 12V DC voltage. It can continuously supply a direct current up to 20A. The IDC-360C-12 is a DC/DC converter that converts a DC voltage from 36V to 12V DC voltage and can supply a direct current of up to 30A.

36 inverter to 12v inverter

Contact Us

For catalog requests, pricing, or partnerships, please visit:
<https://www.drugiswiatowykongrespolakow.pl>